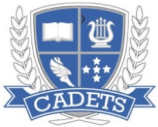


Howard-Winneshiek Community Schools

2024-25 School Year

Return to Learn Plan



Howard-Winneshiek Community Schools

Our **vision** is to discover, develop and expand passions, creativity and strengths.

Our **mission** is to prepare and empower our students to think creatively, serve, contribute and succeed locally and globally.

Howard-Winneshiek Community Schools

2024-25 School Year

Return to Learn Plan

On-Site Learning Option



Howard-Winneshiek Community Schools

Our **vision** is to discover, develop and expand passions, creativity and strengths.

Our **mission** is to prepare and empower our students to think creatively, serve, contribute and succeed locally and globally.

On Site Student Learning

Students will return to school on Friday, August 23rd on-site for the start of the 2024-2025 school year.

We will have regular school and will implement the following safety precautions for students and staff if there is a need, or a mandate issued.



Howard-Winneshiek Community Schools

Our **vision** is to discover, develop and expand passions, creativity and strengths.

Our **mission** is to prepare and empower our students to think creatively, serve, contribute and succeed locally and globally.

Face Coverings

This will be a decision that families will need to determine unless a mandate is issued.



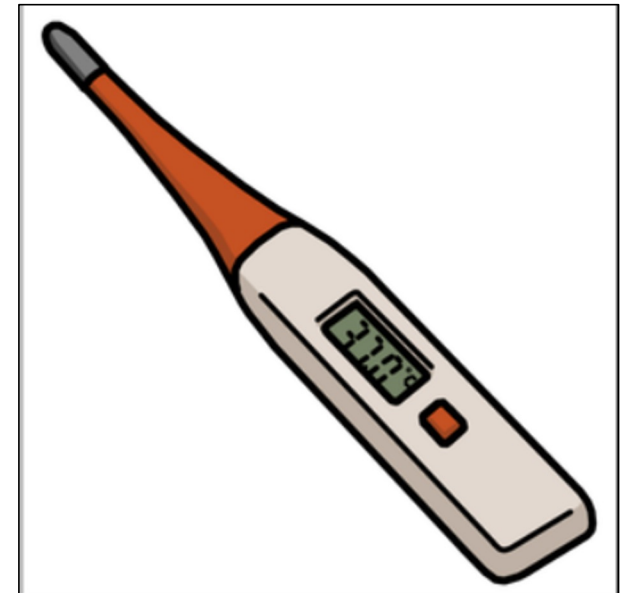
Howard-Winneshiek Community Schools

Our **vision** is to discover, develop and expand passions, creativity and strengths.

Our **mission** is to prepare and empower our students to think creatively, serve, contribute and succeed locally and globally.

On Site Student Learning Temperature Screenings

Student(s) should be kept at home if their temperature is above 100.4 degrees. The Health Offices will check students' temperatures if symptoms are displayed.



Howard-Winneshiek Community Schools

Our **vision** is to discover, develop and expand passions, creativity and strengths.

Our **mission** is to prepare and empower our students to think creatively, serve, contribute and succeed locally and globally.

On-Site Learning Before Leaving Home

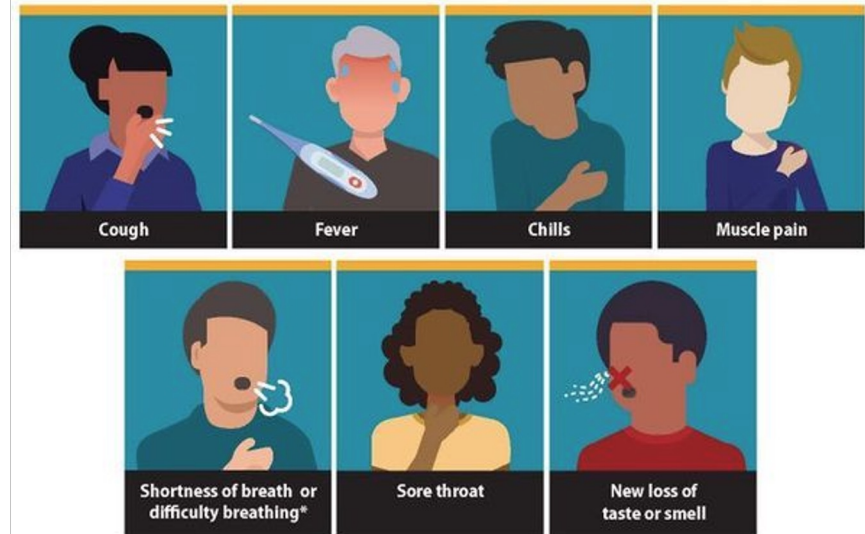
A parent or guardian will check their student(s) for the following symptoms listed below that would prevent their student(s) from attending school:

- Shortness of breath or difficulty breathing
- Chills
- Muscle Aches
- Sore Throat
- Headache
- Fatigue
- Congestion or runny nose
- Cough
- Vomiting
- Diarrhea or New loss of taste or smell



- **If your student(s) is experiencing any of these symptoms please keep them at home.**

COVID-19 Symptoms and Spread



Howard-Winneshiek Community Schools

Our **vision** is to discover, develop and expand passions, creativity and strengths.

Our **mission** is to prepare and empower our students to think creatively, serve, contribute and succeed locally and globally.

Breakfast/Lunch

Meals will be served in the cafeteria and students will abide by the social guidelines as much as possible.



Howard-Winneshiek Community Schools

Our **vision** is to discover, develop and expand passions, creativity and strengths.

Our **mission** is to prepare and empower our students to think creatively, serve, contribute and succeed locally and globally.

Classroom Arrangements

Classroom arrangements will reflect efforts for social distancing, seating arrangements in the same direction, or use of dividers if needed or mandated.



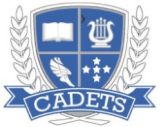
Howard-Winneshiek Community Schools

Our **vision** is to discover, develop and expand passions, creativity and strengths.

Our **mission** is to prepare and empower our students to think creatively, serve, contribute and succeed locally and globally.

Hallway Procedures

If needed classroom schedules will be altered to accommodate social distancing guidelines during the hallway and passing times as much as possible.



Howard-Winneshiek Community Schools

Our **vision** is to discover, develop and expand passions, creativity and strengths.

Our **mission** is to prepare and empower our students to think creatively, serve, contribute and succeed locally and globally.

Transportation

Buses will be disinfected as needed after their routes. Windows and vents may be open to provide air circulation as weather permits.



Howard-Winneshiek Community Schools

Our **vision** is to discover, develop and expand passions, creativity and strengths.

Our **mission** is to prepare and empower our students to think creatively, serve, contribute and succeed locally and globally.

Cleaning of Facilities

Cleaning and disinfecting schools on a daily and weekly basis will be a priority.

Additional measures to ensure clean facilities include:

- Hand sanitizers at the entries of the buildings and in classrooms for students and staff.
- Disinfectant wipes
- Plexiglass barriers
- Increased air ventilation
- Increased daytime custodial cleaning of frequently touched surfaces.



Howard-Winneshiek Community Schools

Our **vision** is to discover, develop and expand passions, creativity and strengths.

Our **mission** is to prepare and empower our students to think creatively, serve, contribute and succeed locally and globally.

Nurse and Health Offices

Nurses will evaluate for COVID-19 symptoms as needed.



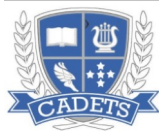
Howard-Winneshiek Community Schools

Our **vision** is to discover, develop and expand passions, creativity and strengths.

Our **mission** is to prepare and empower our students to think creatively, serve, contribute and succeed locally and globally.

Protocol for a Positive Case of COVID-19 for Students and Staff

- The school nurse and principal will communicate with family regarding next steps to ensure confidentiality.
- The district will contact the Howard County Public Health Department.



Howard-Winneshiek Community Schools

Our **vision** is to discover, develop and expand passions, creativity and strengths.

Our **mission** is to prepare and empower our students to think creatively, serve, contribute and succeed locally and globally.

Extracurricular Activities

Howard-Winneshiek Community Schools will follow the State of Iowa Athletic and Athletic Union and all Fine Arts Associations regarding extracurricular activities.

If your student has symptoms or have been in “direct exposure” to a positive case Contact Public Health for procedures, and notify the school.

Who to notify at school of a potential case or exposure:

Mr. Todd Coulter - Assistant Principal/Activity Director

tcoulter@howard-winn.k12.ia.us or at 563-547-2764



Howard-Winneshiek Community Schools

Our **vision** is to discover, develop and expand passions, creativity and strengths.

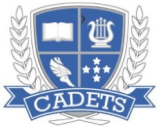
Our **mission** is to prepare and empower our students to think creatively, serve, contribute and succeed locally and globally.

Howard-Winneshiek Community Schools

2024-25 School Year

Return to Learn Plan

Hybrid Learning-District Decision



Howard-Winneshiek Community Schools

Our **vision** is to discover, develop and expand passions, creativity and strengths.

Our **mission** is to prepare and empower our students to think creatively, serve, contribute and succeed locally and globally.

Hybrid Learning-District Decision Combination of On-site and At-Home

If Howard Winneshiek Schools would have to reduce the number of students in our buildings based on recommendations from the Iowa Dept. of Health and Howard County Public Health these are the guidelines that would be in place.

- All students are required to participate and attendance would be taken.
- The delivery of instruction and grading would be a combination of on-site and at-home learning.



Howard-Winneshiek Community Schools

Our **vision** is to discover, develop and expand passions, creativity and strengths.

Our **mission** is to prepare and empower our students to think creatively, serve, contribute and succeed locally and globally.

Howard-Winneshiek Community Schools

2024-25 School Year

Return to Learn Plan

Continuous On-Line Required Learning



Howard-Winneshiek Community Schools

Our **vision** is to discover, develop and expand passions, creativity and strengths.

Our **mission** is to prepare and empower our students to think creatively, serve, contribute and succeed locally and globally.

Continuous Required On-Line Learning

- The Howard Winneshiek Community Schools will offer a virtual home on-line learning experience if:
- The Department of Education, in consultation with the Department of Public Health, approves of the temporary move to primarily remote learning for an entire building or district because of public health conditions; or
- The school district, in consultation with state and local public health, determines that individual students, classrooms or buildings must temporarily move to primarily remote learning; or
- A school chooses to temporarily move to online learning because of severe weather instead of taking a snow day.



Howard-Winneshiek Community Schools

Our **vision** is to discover, develop and expand passions, creativity and strengths.

Our **mission** is to prepare and empower our students to think creatively, serve, contribute and succeed locally and globally.

Continuous Required On-Line Learning

- All students are required to participate and attendance would be taken and recorded.
- Academic work is equivalent in rigor to that of the typical classroom.
- On-line learning may include online education, home delivery or pick up of educational materials and resources.



Howard-Winneshiek Community Schools

Our **vision** is to discover, develop and expand passions, creativity and strengths.

Our **mission** is to prepare and empower our students to think creatively, serve, contribute and succeed locally and globally.

Technology

- Each student in the HWCSD will be assigned a learning device to limit the need of sharing technology.
 - Students in TK-5 will be assigned an iPad
 - Students in 6-12 will be assigned a laptop
- If students would need to self-isolate or if the district would need to move to hybrid on continuous required on-line learning, students would be able to take these devices home to continue their learning.



Howard-Winneshiek Community Schools

Our **vision** is to discover, develop and expand passions, creativity and strengths.

Our **mission** is to prepare and empower our students to think creatively, serve, contribute and succeed locally and globally.